



0.7 Miles West On U.S. Hwy 64
Reservation Line: 877-570-2267



U.S. Highway 64 Put In
6917 West U.S. Hwy 64 West, Lexington, NC 27295
35°43.449'N, 80°23.468'W



A Davidson County Recreational Trail



The North Carolina Daniel Boone Heritage Canoe Trail

The pilot project of the Davidson County Blueway Master Plan, the North Carolina Daniel Boone Heritage Canoe Trail strives to create a quality outdoor recreational experience while accurately interpreting the natural and cultural history of North Carolina's Davidson-Davie-Rowan County Yadkin River corridor with an emphasis on the Daniel Boone era, 1753-1769.

The twenty-two mile trail emphasizes ten significant historical locations along the river each denoted by sequentially numbered navigational markers visible from the river and interpreted by explanatory text and illustrative images on the trail map.

The Tourism-Recreation Investment Partnership for Davidson County Foundation (TRIP) is a non-profit foundation comprised of volunteers and created to facilitate community efforts toward the implementation of the Davidson County Parks and Recreation and Tourism Development Master Plan.

CAIRN 1: SWICEGOOD'S MILL

Located about 0.75 miles below the U.S. 64 put-in, this 1700 ft. long rapid drops 2.19 ft., a low Class II rapid. This rapid is created by the remnants of a large stone structure created in the 1800's by the U.S. Army Corp of Engineers in an effort to establish steamboat navigation of the Yadkin River, an effort subsequently abandoned. This rapid is the best on the Daniel Boone Trail for practicing white water techniques.



Swicegood Mill Rapid: Class 2
Portage river right, scattered boulders
Left chute with standing wave

General River Hazards

The Yadkin is a large free flowing river. Lush vegetation in the form of trees and shrubs line much of its banks. Low hanging limbs from this vegetation often droop and touch the water's surface creating a hazard from "sweepers" capable of capsizing canoes and kayakers. When shrubs, trees, and snags become submerged in the river they create "strainers". A swimmer can easily become pinned in a strainer by the river's flow. All paddlers must exercise caution when close to the bank and be aware that sweepers and strainers may pose serious hazards anywhere along the trail.

CAIRN 2: HAIRSTON'S FERRY

The renowned Hairston family owned an extensive system of forty tobacco plantations in the North Carolina and Virginia piedmont. The Hairston's operated a ferry at this location. Author Henry Wiencek's award winning 2000 book *The Hairston's: An American Story in Black and White* tells the story of the Hairston family who still have many descendants living in the area.



CAIRN 3: BOONE'S SHOAL-BIG ROCK RAPID

Daniel Boone wrote that he fished "the shoals of the Yadkin above Dutchman's Creek." This rapid, one of the most significant rapids upriver from Dutchman's Creek, is about half way between the U.S. 64 put-in and the NC Wildlife Concord Church Boat Access off of NC 801 in Davie County. Called "Big Rock Shoal" in the 1879 U.S. Army Survey of the Yadkin, it is a large ledge with a very large boulder in the center. This a good lunch stop and a fun Class I drop.



Leave No Trace

- Plan ahead and prepare
- Dispose of waste properly
- Leave what you find
- Respect wildlife
- Minimize campfire impacts
- Travel and camp on durable surfaces
- Respect private property and be considerate of other visitors

For more information about Leave No Trace principles, visit: www.lnt.org

Safety

- Always wear a life jacket
- Be prepared for the weather, expect to get wet and dress appropriately
- Avoid wearing cotton clothing
- Know fishing and boating regulations
- Leave a float plan with friends or family
- Understand your skill level and plan your route accordingly
- Bring plenty of water and safety equipment
- If you capsize, hold onto the upstream side of your boat unless it presents a life threatening situation
- Avoid river hazards including strainers
- Be prepared for water levels
- Carry a cellular telephone and emergency numbers
- Never boat alone

PERKINS GAME LAND

CAIRN 4: DUTCHMEN'S CREEK

Early property records show the Boones owning land on the western side of the Yadkin River in present-day Davie County. Newlyweds Daniel and Rebecca Boone made their home on Dutchman's Creek, also in Davie County. Although local legends steadfastly maintain that the Boones settled on the Davidson County side of the river during their first year in the area, this contention has not been documented by historians. This segment of the Yadkin is the beginning of what is known locally as the "Horseshoe Neck". Also, here begins the first Significant Natural Heritage Area along the Daniel Boone Heritage Trail.



CAIRN 6: BOONE'S CAVE PARK

Boone's Cave Park is one of the oldest public parks located on the Yadkin River. The park is named for a significant cave located on a bluff above the river. Local lore is rich with legends of Daniel Boone frequenting the cave as a young man. As with the Boone family's earliest home possibly being located in Davidson County, young Daniel's exploits in and around the cave have not been historically documented. A former state park, Davidson County now owns and administers Boone's Cave Park at: 3352 Boone's Cave Road, Lexington, NC 27295



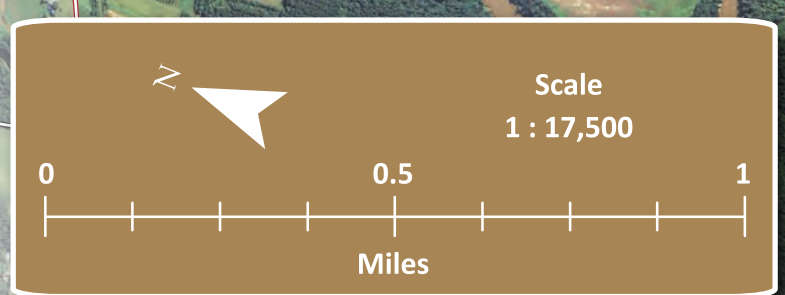
Do not attempt to disembark at the #6 Cairn location. Proceed 450 yards downriver to Baptism Rock Access



Baptism Rock Access at Boone's Cave Park
3352 Boone's Cave Road
Lexington, NC 27295
35°48.001'N, 80°28.469'W

CAIRN 5: BOONE GAMELANDS

The trail's second Significant Natural Heritage Area is found here, the "West Neck Mesic Slopes". It "contains many large trees, as well as infrequently encountered plant and animal species." Portions of the lands on the right side of the river are now public game lands administered by the North Carolina Wildlife Commission allowing modern day sportsmen to hunt the same lands Daniel Boone hunted.



35°52'30"N
35°52'30"N
35°51'30"N
35°51'30"N
35°51'0"N
35°51'0"N
35°47'30"N

80°23'0"W
80°22'30"W
80°22'0"W
80°22'0"W
80°23'0"W
80°23'0"W
80°23'0"W
80°23'0"W

Reporting Emergencies

Dial 911 to report any emergency on the trail. Since the Yadkin River serves as a county boundary dividing three local county jurisdictions – Davidson, Davie and Rowan, a 911 call placed from a cell phone on the river may be received by any of the three county's 911 call centers. When reporting an emergency, inform the 911 operator of any numbered navigational marker within sight or the number of the last navigational marker you recall passing. Also attempt to determine for the 911 operator which of the three county jurisdictions the emergency is located in using this guide:

Facing Downstream	Trail Segment	County Jurisdiction
River LEFT	Anywhere Along the Trail	DAVIDSON
River RIGHT	US 64 to Hannah's Ferry (Marker 8)	DAVIE
River RIGHT	Hannah's Ferry (Marker 8) to York Hill Access	ROWAN

Stream Flow Data

Current and past stream flow data for the trail may be accessed on-line at:
http://waterdata.usgs.gov/nc/nwis/tw/?site_no=02116500&PARAMeter_cd=00065,00060
 (USGS 02116500 Yadkin River at Yadkin College, NC)

Future stream flow predictions may be accessed on-line at:
<http://water.weather.gov/ahps2/hydrograph.php?wfo=rah&gagc=yadn7>

TRAIL SEGMENT	MINIMUM FEET	MAXIMUM FEET	MINIMUM CF/S	MAXIMUM CF/S
US 64 to Boone's Cave Park	1.0	4.0	1,000	5,000
Boone's Cave Park Hannah's Ferry*	2.5	5.0	3,000	6,000
Hannah's Ferry to York Hill Access	3.5	6.5	4,000	8,000

*Stream flow may diminish significantly below Boone's Cave Park due to High Rock Lake impoundment of the river. Allow for extra time and paddling effort.

Legend



PARKING



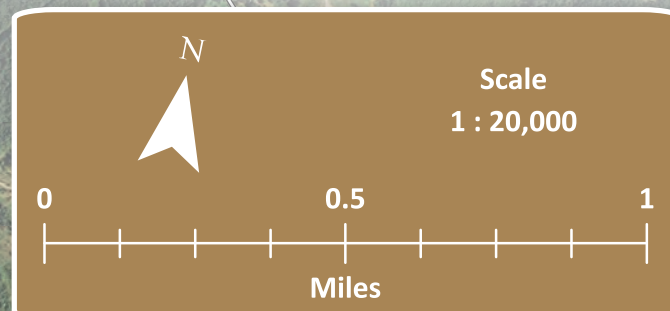
PUBLIC ACCESS



PRIMITIVE CAMPING



RESTROOMS



CAIRN 7: BOONE'S FORD

Called Boone's Ford, it is unknown if this feature is named for Daniel or another member of the Boone family. Tom Magnuson of the Trading Path Association who has done significant research and documentation of the various historic crossing points of this section of the Yadkin suggests further research for historical verification of the naming of this ford. Boone's Ford may have been very important historic crossing as it possibly could have been the "Indian Trading Road" shown on one of the oldest maps of the area, the Moseley Map, circa 1733.



CAIRN 8: HANNAH'S FERRY

Hannah's Ferry was located here. Hannah's Ferry was an example of a "reaction ferry", an ingenious design whereby the ferry boat relied solely upon the river's current to power the boat back and forth across the river. The ferry's direction of travel was controlled by the adjustment of a movable board which would change the angle of the ferry's bow in relation to the river's current allowing the ferry to advance across the river tugging against an overhead cable. Modern paddlers "ferry" across rivers today using the same principle.



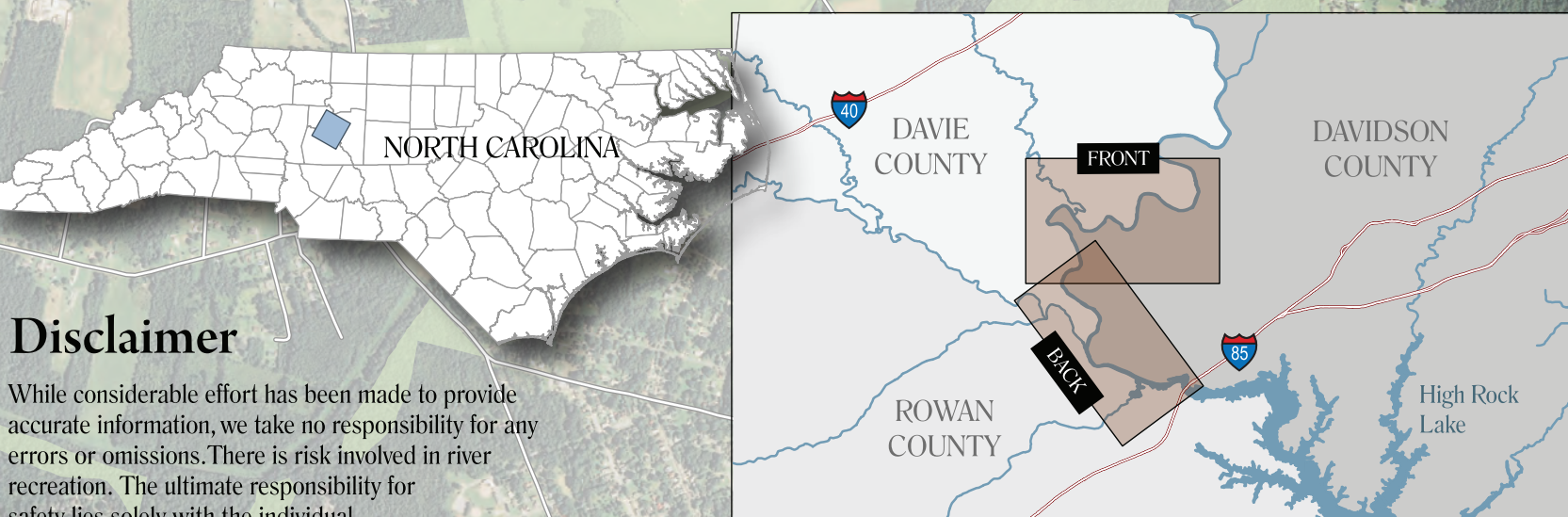
CAIRN 10: BEARD'S BRIDGE

Here, just upriver from the York Hill take-out are the remaining piers of Beard's Bridge, an 1818 covered toll bridge which represented the area's first fixed crossing built over the Yadkin River. The bridge was financed by Salisbury businessman Lewis Beard and designed by renowned architect and civil engineer Ithiel Town. Town went on to design the North Carolina Capital Building in Raleigh. Mr. Beard's toll bridge fell into disrepair after the Civil War and a new iron bridge was erected on these same piers in 1899. The 1899 remained until the Wil-Cox Bridge, visible downriver was built in 1922.



CAIRN 9: BEARD'S CREEK-UPPER HIGH ROCK MACROSITE

Here the Yadkin enters the upper reaches of High Rock Lake, a 15,180 acre hydroelectric reservoir. This section of the river marks the beginning of the most extensive Significant Natural Heritage Area in Davidson County. On the bluffs above the river are the Yadkin Basin Slopes, an extensive area of mature oak and hickory forests. In the floodplain lies the North Shore Bottomland Forest. A series of ponds parallel to the river on both sides may represent an ancient bed of the river. Most of these ponds have been created or enhanced by beaver dams.



Disclaimer

While considerable effort has been made to provide accurate information, we take no responsibility for any errors or omissions. There is risk involved in river recreation. The ultimate responsibility for safety lies solely with the individual.

Piers of Beard's Bridge
Snag and driftwood piles
Variable currents and possible strainers



Located Off of Sowers Road
0.8 Mile From York Hill Boat Access

Open Year Round
RV Sites-Tent Sites-Playground
Pool-Fishing-Bathroom-Laundry
Wireless Internet-Cable TV
Pets Welcome!

Reservations & Information
336-853-4567
CrossWindsFamilyCampground.com

Cross Winds Family Campground
160 Campground Lane
Linwood, NC 27299
(GPS 100 Sowers Rd. Linwood)